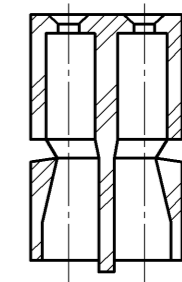
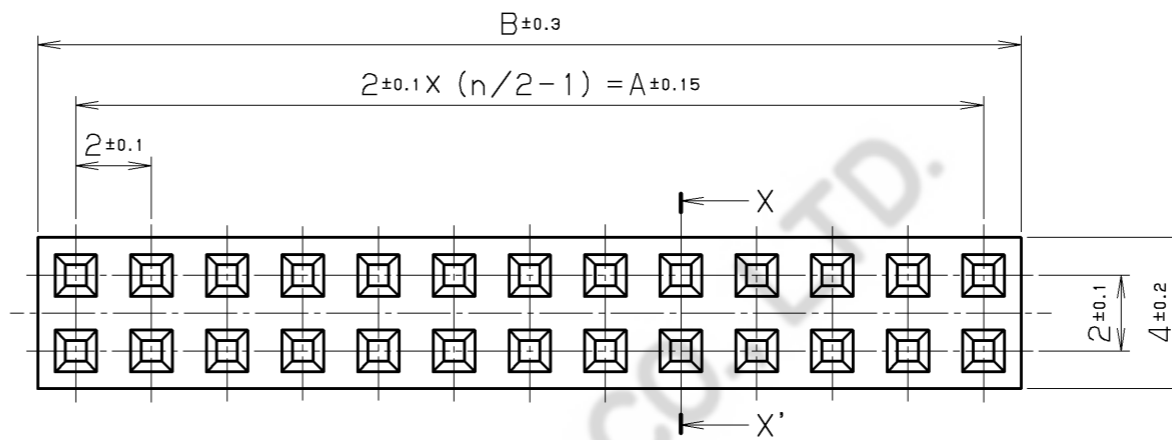
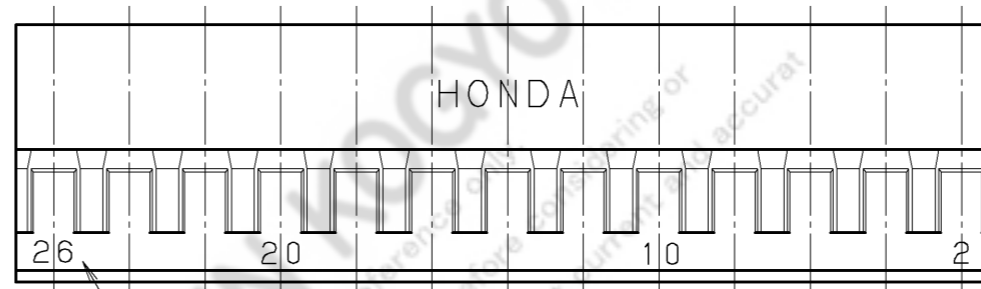


Table1.Dimensions Aand B

n	A	B	CONTACT NO. DISPLAY
6	4	6	1, 2, 5, 6
8	6	8	1, 2, 7, 8
10	8	10	1, 2, 9, 10
12	10	12	1, 2, 9, 10, 11, 12
14	12	14	1, 2, 9, 10, 13, 14
16	14	16	1, 2, 9, 10, 15, 16
18	16	18	1, 2, 9, 10, 17, 18
20	18	20	1, 2, 9, 10, 19, 20
24	22	24	1, 2, 9, 10, 19, 20
26	24	26	1, 2, 9, 10, 19, 20, 25, 26
28	26	28	1, 2, 9, 10, 19, 20, 27, 28
30	28	30	1, 2, 9, 10, 19, 20, 29, 30
34	32	34	1, 2, 9, 10, 19, 20, 29, 30, 33, 34
36	34	36	1, 2, 9, 10, 19, 20, 29, 30, 35, 36
44	42	44	1, 2, 9, 10, 19, 20, 29, 30, 39, 40, 43, 44



SectionXX'



CONTACT NO. DISPLAY (Table1)

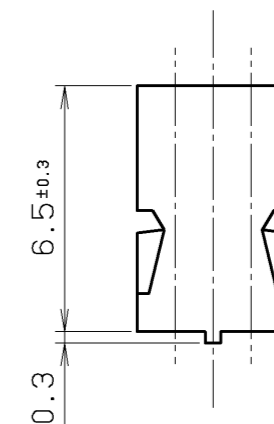
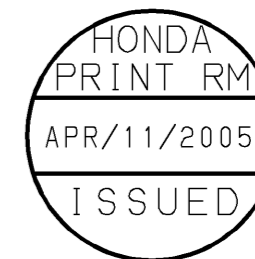


Table2.CRIMP SOCKET

CONTACT FINISH		COMPATIBLE WIRE
TIN PLATING	PART OF GOLD PLATING	
LPC-F104S (-R2)	LPC-F103S (-R2)	AWG# 32
LPC-F114S- (50, 500R)	LPC-F113S- (50, 500R)	
LPC-F104N (-R2)	LPC-F103N (-R2)	AWG# 28~32
LPC-F114N- (50, 500R)	LPC-F113N- (50, 500R)	
LPC-F104L (-R2)	LPC-F103L (-R2)	AWG# 22~26
LPC-F114L- (50, 500R)	LPC-F113L- (50, 500R)	



NOTE1. "n" SHOWS NUMBER OF CONTACTS.

2.THE 24 POS. AND 30 POS. CONNECTORS CUT AN INSULATOR AT THE "B" SIZE PART AND MAKES A CONNECTOR.

△									
△	APR.05.2005	T. O	CHANGE OF CONTACT FINISH						
△	DEC.05.2000	K. N	CHANGE OF COMPATIBLE WIRE		INSULATOR	PPO	1		UL94V-0 BLACK
LTR.	DATE	BY	REV. DESCRIPT	No.	PART NAME	MATERIAL	QTY	FINISH	NOTE
	DATE		SCALE	UNIT	3RD. A. P	HONDA TSUSHIN KOGYO CO., LTD.			
	AUG.06 (1999)		5/1	mm (INCH)					
	APP. DATE&REV.								
	DR.	DE.	CHK.	CHK.	APP.	NAME	FEMALE INSULATOR		
	T. ODA	T. ODA	—	C. NUNOKAWA	H. EBIHARA	PART NO.	LPC- () F02		REV. 2B